

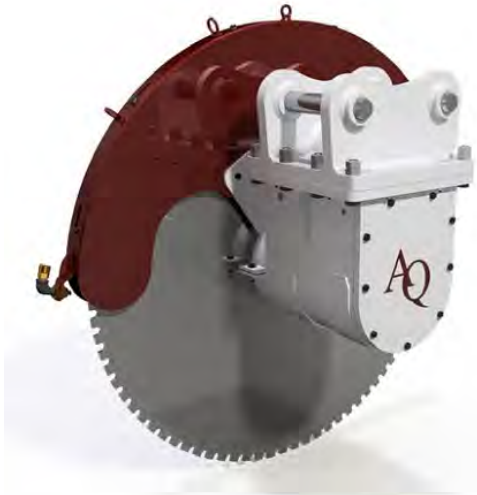


The Leader in Rock & Concrete Cutting



HYDRAULIC CUTTING ATTACHMENTS

DIAMOND & CARBIDE SAW ATTACHMENTS

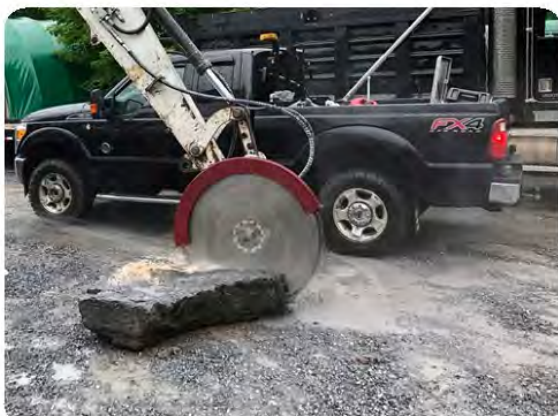


AQD SERIES OF DIAMOND SAWS

For the maximum precision and extreme applications the Antraquip AQD Series is a common solution for controlled demolition or dimensional stone applications. With saws that can fit excavators from 5 to 40 tons these attachments will provide maximum performance with various blade sizes and styles to fit the application.

DIAMOND SAW

TECHNICAL DATA	UNIT	AQD60	AQD150
Cutting Depth	in (mm)	16 - 28 (400 - 700)	16 - 32 (400 - 800)
Cutting Wheel Diameter	in (mm)	40 - 63 (1.600 - 1.800)	48 - 70 (1.200 - 1.800)
Rated Power	HP (kW)	60 (45)	150 (110)
Carrier Weight (Recommended)	tons	5 - 20	15 - 40
Recommended Oil Flow	GPM (L/min)	16 - 28 (60 - 105)	37 - 92 (140 - 348)



www.antraquip.net



PRECISION & POWER FOR ROCK & CONCRETE CUTTING

AQC SERIES OF CARBIDE SAWS / ROCKWHEELS

With dual motor setup these carbide saws provide a tremendous amount of torque and cutting force concentrated on the blade/wheel. Capable of cutting hard rock or reinforced concrete these attachments are common for narrow trenches and demolition applications.

CARBIDE SAW

TECHNICAL DATA	UNIT	AQC180	AQC320
Maximum Cutting Depth (A)	in (mm)	16 - 30 (400 - 750)	24 - 48 (600 - 1.200)
Cutting Width (B)	in (mm)	3 - 8 (80 - 200)	4 - 16 (100 - 405)
Cutting Wheel Diameter	in (mm)	48 - 80 (1.200 - 2.000)	60 - 118 (1.500 - 3.000)
Rated Power	HP (kW)	180 (140)	320 (240)
Torque Output at 375 bar	ft lbs (Nm)	16,600 (22.500)	38,350 (52.000)
Cutting Force at 375 bar	lbs (N)	3,640 - 8,115 (16.200 - 36.100)	9,575 - 16,700 (42.600 - 74.300)
Carrier Weight (Recommended)	tons	15 - 35	35 - 65
Recommended Oil Flow	GPM (L/min)	52 - 80 (200 - 300)	80 - 160 (300 - 600)

